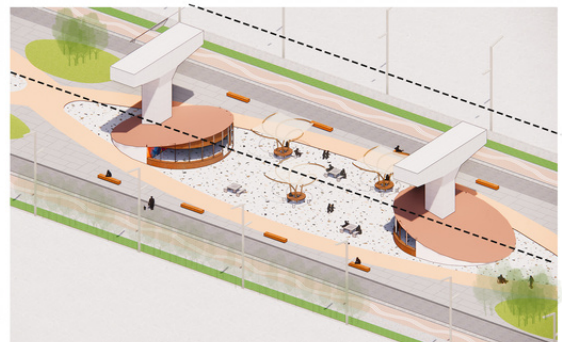


SECOND | VSOI_2022_T133

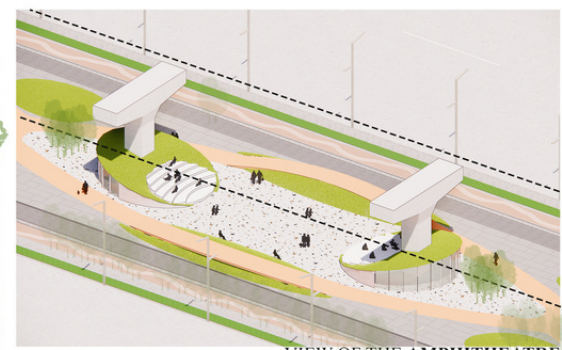
The Happy Highway

Giving back to the City

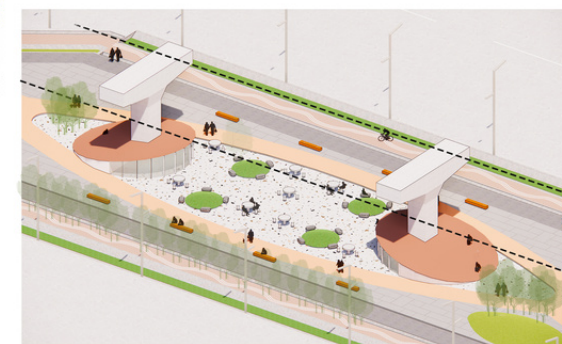
The upcoming, partially elevated Dwarka expressway provides an opportunity for urban spaces to flourish in the left over pockets below the upraised fly over. Eventually, people will spill onto the streets , spreading cheer and receiving cheer from their fellow residents and from the space itself. Our proposal, 'The Happy highway ' is designed to accommodate the changing needs of a place and its people. A modular unit 3m in height is replicated through out the length of the highway, wherever required. Weekly bazaars, food socials, sports activities and commerce can all happen under the same roof. Furthermore, apart from the community as a whole, the design focuses on the needs of individuals as well. Keeping in theme with the city's green initiatives, a Miyawaki forest comprising of small and medium sized shrubs is introduced after the stretch comprising of the above mentioned activities. This allows an individual to feel at peace and in harmony with nature. The Miyawaki forests are great for the environment and act as a large vessel for carbon sequestration. Along with this, bio-swales as well as porous footpaths are introduced for the effective drainage of the storm water. Thus, our proposal aims at addressing the needs of the community, individuals and the Environment as well.



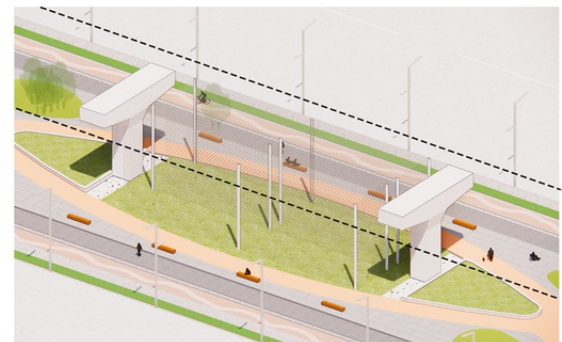
VIEW OF THE LIBRARY AND CO-WORKING SPACE



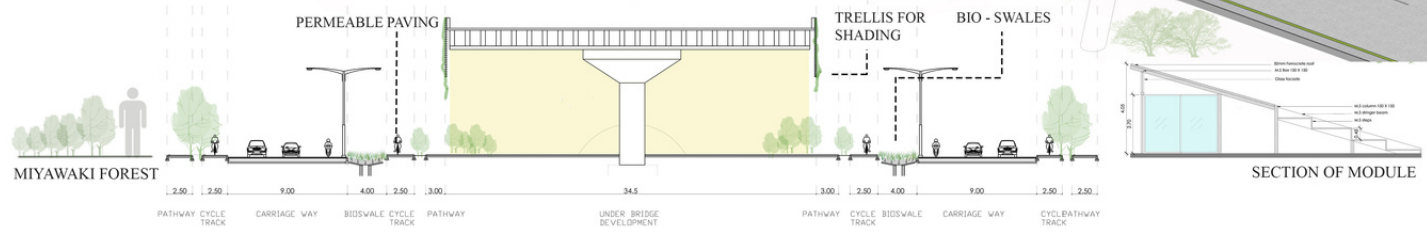
VIEW OF THE AMPHITHEATRE



VIEW OF THE EATERIES



VIEW OF SPORTS TURF



VIEW OF THE MIYAWAKI FOREST



TYPICAL VIEW